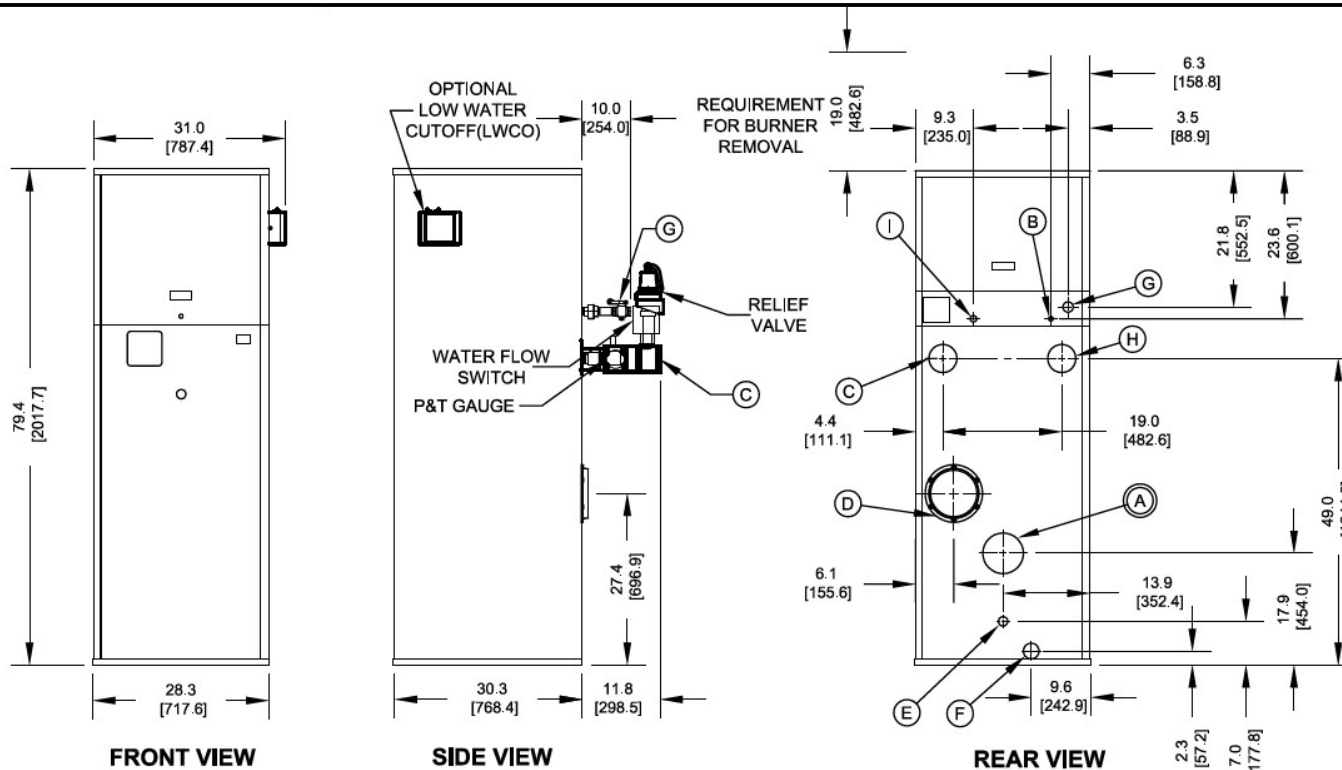


Submittal Data Sheet



KEY	DESCRIPTION	
A	Flue Outlet	6" [152.4] Diameter (AL29-4C SS)
B	Factory Installed Pilot Gas Li	1/4" [6/4] O.D. Tube
C	Water Supply to System	3" NPT
D	Inlet Air	8" [203.2] Diameter
E	Drain, Startup Condensate	5/8" [15.9] O.D. Tube SS
F	Appliance Drain	1" NPT
G	Gas Supply	1 1/2" NPT
H	Water Return from System	3" NPT
I	Optional Gas Train Vent	3/4" NPT (D.B.&B & D.B.&B w/ POC Only)

NOTES:
1. SEE O&M FOR REQUIRED INSTALLATION CLEARANCES.
2. DIMENSIONS SHOWN ARE FOR REFERENCE ONLY.
3. DIMENSIONS ENCLOSED IN [] ARE IN MM.

Submittal Data Sheet

RATINGS AND CAPACITIES

Input (MBH):	1,500,000	BTU/HR
Output (MBH):	1,320,000	BTU/HR
Boiler Horsepower:	39.4	BTU/HR
Thermal Efficiency:	88.0%	BHP
Heating Surface:	264	Sq.Ft.
Water Content:	17.4	Gallons
Fuel:	Natural Gas or LP Gas	
Firing Rate:	Reliable Modulation	
Burner Turndown:	3:1	
Low NOx Emissions:	<10 ppm	
Inlet Gas Pressure (NG):	See Chart at right	
Inlet Gas Pressure (LP):	See Chart at right	

* This data supercedes data found on Table 3 of I&O Manual, per PRODUCT UPDATE issued June 6, 2024.

Shipping Weight, Approximate: **1,327** lbs

ASME Section IV (Max 160 PSIG / 210°F)

Setpoint range is 145-190°F

Adjustable, manual reset high limit setting of ≤ 200°F.

ASME HLW stamp MAWT is 210°F for the vessel. (For max setpoint, see Setpoint range.)

UL Certified to ANSI Z21.10.3/CSA 4.3



DIMENSIONS / CONNECTIONS

Height:	79 1/8"	(Note 1)
Width:	28 3/8"	(Note 2)
Length:	30 3/8"	(Note 3)
Supply Connection:	3"	
Return Connection:	3"	
Vent / Air Intake Connections:	6" Vent	8" Intake
Condensate / Appliance Drain Connection:	5/8" Condensate Tube	1" NPT Drain
Gas Connection:	1 1/2"	

NOTES:

1. Height dimension is from floor to top of jacket.

2. Length is from jacket front to jacket rear.

3. Dimensions shown are for reference only

FLows AND PRESSURE DROPS

Delta T	Flow (GPM)	ΔP (Ft. Hd)
20°F ΔT	120 (Max)	7.37
40°F ΔT	63 (Min)	1.85

Electrical Supply Options

<input type="checkbox"/>	120v/60hz/1ph (Standard)	7.5 amps
<input type="checkbox"/>	208v/60hz/1ph	6.6 amps
<input type="checkbox"/>	230v/60hz/1ph	6.4 amps
<input type="checkbox"/>	208v/60hz/3ph	6.0 amps
<input type="checkbox"/>	230v/60hz/3ph	6.0 amps
<input type="checkbox"/>	460v/60hz/3ph	3.0 amps

Blower Motor (hp)

1-1/2

Relief Valve Options

<input type="checkbox"/>	125 psi (STANDARD)
<input type="checkbox"/>	150 psi (OPTIONAL)

Inlet Gas Pressure

SIZE	Nat. Gas Min. ("w.c.)	LP Min. ("w.c.)	Max
500	5.0" w.c.	8.0" w.c.	14.0" w.c.
750	7.0" w.c.*		
1000	7.0" w.c.*		
1500	7.0" w.c.*		
2000	9.0" w.c.*	9.0" w.c.	
2000s	7.0" w.c.	8.0	
2500	6.0" w.c.		
3000	6.0" w.c.		

* NOTE: Optional natural gas train with 4" w.c. minimum inlet gas pressure
ONLY AVAILABLE on sizes 750, 1000, 1500 & 2000.

Submittal Data Sheet

STANDARD EQUIPMENT		OPTIONAL EQUIPMENT												
<u>PRESSURE VESSEL DESIGN</u> Copper Fin-tube construction Bronze header design Gasketless heat exchanger ASME Section IV certified "H" stamp MAWP 160 PSI & max design temp 250°F 5-year heat exchanger warranty 20-year thermal shock warranty	<u>BOILER EQUIPMENT</u> Siemens RWF55 operating control High limit w/ manual reset safety temperature control Water flow switch Low water cut-off with manual reset safety controller Outlet temperature sensor Combustion air switch Pressure and temperature gauge Safety relief valve (Optional pressure 30 - 150 PSI; See details above.) Single point electrical supply: (Available in: 1 and 3 phase options. See details above.)	<input type="checkbox"/> Low gas pressure venturi, 4" wc (AVAILABLE ONLY on Models 750-2000) [FACTORY INSTALLED OPTION ONLY] <input type="checkbox"/> Line Reactor Adds voltage / spike protection for the blower's VFD. (<i>Highly recommended for areas with dirty voltage.</i>) <input type="checkbox"/> Honeywell 7800 Series display with ModBus Module Line Reactor Adds voltage / spike protection for the blower's VFD. (<i>Highly recommended for areas with dirty voltage.</i>) <input type="checkbox"/> Outdoor Air Sensor <input type="checkbox"/> Condensate neutralizer: <div style="display: flex; justify-content: space-around;"> <input type="checkbox"/> 850 MBH <input type="checkbox"/> 1,200 MBH </div> <div style="display: flex; justify-content: space-around;"> <input type="checkbox"/> 2,000 MBH <input type="checkbox"/> 5,000 MBH </div> <input type="checkbox"/> Pump Kit (Boiler Circulation Pump, Pump Flange Kit Sized based on a 20°F Delta T) <input type="checkbox"/> Annual Maintenance Kit <input type="checkbox"/> System Temperature Sensor <input type="checkbox"/> ModBus RS485 communication for Siemens RWF55 and Honeywell Flame Safeguard Control (Boiler to BMS) <input type="checkbox"/> Universal comms. gateway (BACnet MS/TP, BACnet/IP, N2, Modbus TCP) <input type="checkbox"/> Local / remote switch <input type="checkbox"/> Alarm bell with silencing switch <input type="checkbox"/> Relays: <input type="checkbox"/> General Alarm <input type="checkbox"/> Boiler Status <input type="checkbox"/> Conductor Sequencing Panel: Req. for multiple EVA applications without BMS. Contact your RSM with Questions.)												
<u>COMBUSTION DESIGN</u> Maintenance-free ceramic burner Ultra-low NOx emissions (<10ppm) Whisper quiet operation (<50 dBA) Easy to service, 99% efficient industrial air filter Industrial cast aluminum blower assembly VFD Driven Blower Reliable electric spark-to-pilot ignition 10-year burner warranty Honeywell UV-Scanner	<u>BURNER EQUIPMENT</u> UL/FM/CSD-1 gas train Reliable Turndown Natural or LP gas Pilot gas valve / Pilot gas regulator Siemens SKP-75 gas valve Low and high gas pressure switches with manual reset													
<u>VENTING</u> Sealed or room air combustion Direct vent (sidewall or vertical) (Cat IV) Conventional venting (Cat II) NOTE: This is NOT a Cat 1 Vent appliance.	<u>SIEMENS RWF55 OPERATING CONTROL FEATURES</u> Adjustable set point Remote set point (0-10v or 4-20 mA) Outdoor air temperature reset													
		<p>The Conductor Sequencing Panel manages multiple condensing & non-condensing, small & large heat output, new and/or existing boilers (full modulation), and steam or hot water applications. It helps improve system efficiency by selecting and modulating the right boiler to match operating conditions. The Conductor offers a single point boiler plant Energy Management System (EMS) interface including Modbus TCP/IP, Modbus RTU RS485, BACnet/IP and BACnet MSTP standard. If Lonworks needed, add for the separate Lonworks gateway.</p>												
		Extended Warranty Options Available: <table border="1"> <thead> <tr> <th></th> <th><u>3-Year</u></th> <th><u>5-Year</u></th> <th><u>10 Year</u></th> </tr> </thead> <tbody> <tr> <td><u>Parts Only</u></td> <td><input type="checkbox"/></td> <td><input type="checkbox"/></td> <td><input type="checkbox"/></td> </tr> <tr> <td><u>Parts and Labor</u></td> <td>N/A</td> <td><input type="checkbox"/></td> <td><input type="checkbox"/></td> </tr> </tbody> </table>		<u>3-Year</u>	<u>5-Year</u>	<u>10 Year</u>	<u>Parts Only</u>	<input type="checkbox"/>	<input type="checkbox"/>	<input type="checkbox"/>	<u>Parts and Labor</u>	N/A	<input type="checkbox"/>	<input type="checkbox"/>
	<u>3-Year</u>	<u>5-Year</u>	<u>10 Year</u>											
<u>Parts Only</u>	<input type="checkbox"/>	<input type="checkbox"/>	<input type="checkbox"/>											
<u>Parts and Labor</u>	N/A	<input type="checkbox"/>	<input type="checkbox"/>											